


WEEKLY REPORT

8<sup>th</sup> to 13<sup>th</sup> August 2016



**MARIKUZZ**  
the market buzz



**Buy or Sell**  
in the long run all is well

# Keep an Eye on Changing Market Place...



## TOP STORIES THIS WEEK

- India CPI inflation accelerated to 6.07 per cent in July, up from 5.77 per cent in June.
- IIP grew by 2.1% in June Vs 1.2% in May.
- Max Financial & HDFC board approves scheme of arrangement between max financial, max life, HDFC life and Max India
- Idea Q1 Standalone Net Profit Down 36.1% At ₹497.1 Cr Vs ₹777.8 Cr (YoY). Standalone Revenue Up 7.9% At ₹9,486.6 Cr Vs ₹8,791.5 Cr (YoY)
- Indraprastha Gas receives Lol from PNGRB for City GAs Distribution in Rewari.
- Godrej Properties to launch 12 more projects by March End: ET
- Piramal fund management and Canadian company may form 250\$mn JV.
- GE, L&T to join hands to manufacture subsea equipment.
- CCI approves acquisition of cement plants of JP Associates & Jaypee Cement by Ultratech Cement.
- AB Nuvo Board Approves Composite Scheme Of Agmt Between Co, AB Fin & Grasim.
- Grasim Q1 Standalone Net Profit At ₹320.9 Cr Vs ₹134.5 Cr (YoY) Standalone Total Income Up 24.6% At ₹2,426.5 Cr Vs ₹1,947 Cr (YoY)

## WEEKLY INDICES CHANGE

Index	Close	Prev Close	CHG(%)
SENSEX	28152	28078	0.26
NIFTY	8672	8683	-0.13
MIDCAP	12753	12698	0.43
SMLCAP	12214	12306	-0.75
METAL	9753	9752	0.01
OIL&GAS	10627	10726	-0.92
AUTO	21404	21667	-1.21
TECK	5975	5997	-0.37
BANKEX	21757	21643	0.53
IT	10944	10914	0.27
FMCG	8740	8656	0.97
HC	15961	16307	-2.12
PSU	7272	7282	-0.14
CD	12192	12225	-0.27
POWER	2069	2062	0.34
CG	14999	15154	-1.02
REALTY	1584	1617	-2.04

## GLOBAL INDICES

Index	Close	Prev Close	CHG(%)
DOW	18613	18543	0.38
NASDAQ	5228	5221	0.13
FTSE	6915	6793	1.80
NIKKEI	16919	16254	4.09
HANGSENG	22766	22146	2.80

## TOP GAINERS WEEKLY

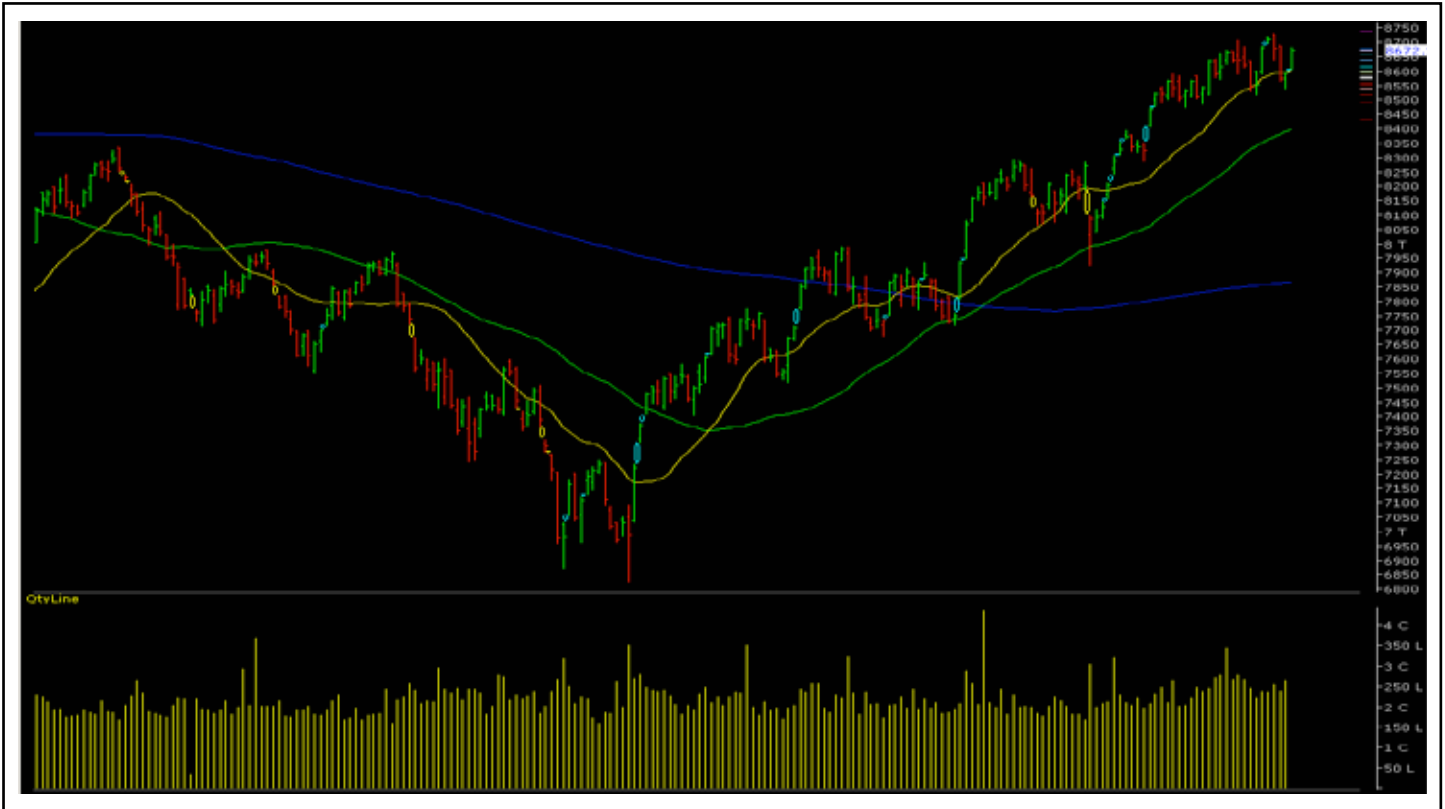
Scrip	Price	% Chg
Atlanta Ltd.	70.90	37.40
Sterling Tools Ltd	695.35	25.96
Hinduja Global Solution	498.55	20.71
Jubilant Life Science	386.75	17.13
Britannia Ind.	3285.1	13.88

## TOP LOSERS WEEKLY

Scrip	Price	% Chg
Dalmia Bharat Sugar	111.45	30.69
J Kumar Infracore	141.25	27.13
Wockhardt Ltd.	810.65	20.14
Aditya Birla Nuvo	1290.30	16.73
Qess Corp	529.80	14.73



# NIFTY CORNER



## SUPPORT & RESISTANCE

S3	S2	S1	Nifty	R1	R2	R3
8350	8450	8500	8672	8750	8850	8900

## MOVING AVERAGES

20DMA	50 DMA	100 DMA	200 DMA
8605	8405	8115	7865

## COMMODITY MARKET

Scrip	Close	P. Close	Change %
GOLD	31327	31228	0.32
Silver	46755	46225	1.15
Crude	2912	2786	4.52

## CURRENCY RATES

Scrip	Close	P. Close	Change %
INR- 1 USD	66.8252	66.8141	0.017
INR – 1 EURO	74.4633	74.4510	0.016
INR- 100 YEN	65.4400	66.1300	-1.04
INR – 1 POUND	86.6255	87.7470	-1.28

# MARKET COMMENTARY

A divergent trend was witnessed on the bourses in the week ended Friday, 12 August 2016 as the barometer index, the S&P BSE Sensex settled with modest gains while the Nifty 50 index settled with small, losses. The Sensex managed to settle above the psychological 28,000 mark after falling below that mark during the week after having regained that mark at the start of the week. Key indices gained in three out of five sessions of the week. The RBI keeping its benchmark lending rate viz. the repo rate unchanged after a policy review on 9 August 2016 weighed on sentiment, while, firmness in global stocks provided support to the domestic bourses. Data showing sustained buying of Indian stocks by foreign portfolio investors and good rains so far during this monsoon season also aided sentiment on the bourses. The Sensex rose 0.26% to settle at 28,152, in the week ended Friday, 12 August 2016. The Nifty 50 index dropped 0.13% to settle at 8,672. The BSE Mid-Cap index rose 0.43%, outperforming the Sensex. The BSE Small-Cap index dropped 0.75%, underperforming the Sensex. For the next week Nifty likely to trade in the range between 8750 – 8850 in the upper side and 8450 - 8350 in the lower side.

## STOCKS AT 52 WK HIGH

Scrip	CMP
Axis Bank	591.00
Dewan Housing	265.15
L&T Finance	90.30
LIC Housing Fin	554.95
Piramal Enter	1678.15

## STOCKS AT 52 WK LOWT

Scrip	CMP
D-Link India	87.80
Inox Wind	184.70
J Kumar Infra	141.25
Lambodhara Text	101.55
Ramco System	525.45

## FII ACTIVITY

DATE	FIGURES IN CRORE
08/08	1156.19
09/08	144.15
10/08	412.56
11/08	608.35
12/08	1203.71
NET	3524.96

## DII ACTIVITY

DATE	FIGURES IN CRORE
08/08	-876.34
09/08	-610.15
10/08	-747.27
11/08	-621.65
12/08	-392.47
NET	-3247.88

## WEEKLY STOCK IDEA

Scrip	B/S	CMP	TGT
CANBK	B	255	265
WOCKPHARMA	B	810	865
FORTIS	B	193	225
M&M	B	1450	1495
ESCORTS	B	299	325

## VOLUME BREAKOUT STOCKS

Scrip	CMP
STC India	111.35
J Kumar Infra	141.25
AdityaBirlaNuvo	1290.30
Bank of India	114.10
Talwalkars	247.80

Buy on dips & Sell on rise with Stop-loss of 3%



# WEEK AHEAD

## MAJOR RESULTS AGM MEETING THIS WEEK:

**16 AUGUST**

- POWERGRID
- OCL
- JUSTDIAL

**17 AUGUST**

- PHILIPCARB
- RADICO
- DALMIABHA
- STAR
- UFLEX

**18 AUGUST**

- INDIACEM
- SCI

**19 AUGUST**

- GENUSPOWER
- SUNFLAG
- SUNTV
- NFL
- ASTRAL

# COMMODITY OUTLOOK

## ■ GOLD-OCT:

MCX Gold-Oct has major support at 30900/30630, if it will break @30630, then only you can see it upto-> 30270/30030. And upper side major Resistance on @31755, if it will break in future then only you can see upto-> 32470/32890.

## ■ Silver-Sep:

It has major & strong support = 45500/44400, if it will break @45500, then only you can see it upto-> 44800/43700. Otherwise it may retreat upto-> 48400/50270 in near term.

## ■ Copper-Aug:

Copper-Aug seems to weak, it has major Resistance at @334.70/342.70, it may be down upto-> 317/310/306 in a few days. And upper side it will face of strong Resistance at @334.70, if it will break it, then only, you can see it upto-> 341.70/348.50.

## ■ Crude oil-Aug:

Technically, it seems too weak, it has major support = 2770/2625, if it will break @2770, then only, you can see it upto-> 2660/2525. Otherwise it may retreat upto-> 2966/3030.

## PRECIOUS METALS

Commodity	S2	S1	Pivot	R1	R2
Gold-Oct	30440	30830	31261	31655	32079
Silver-Sep	44033	45309	46670	47948	49309

## BASE METALS

Commodity	S2	S1	Pivot	R1	R2
Copper-Aug	309	315	321	326	333
Zinc- Aug	144.25	147.40	151.25	154.60	158
Lead-Aug	116.10	118.60	121.80	124.25	126.50
Nickel-Aug	660	678	712	736	758

## ENERGY

Commodity	S2	S1	Pivot	R1	R2
Crude oil-Aug	2566	2727	2871	3027	3169
Natural Gas-Aug	151	165	174	181	198

Join us :  

# Celebrate the *Unity in Diversity*

With the diverse investment and trading platforms from Indira get unified returns for long term benefits.



'Ramavat House' E-15 Saket Nagar, Indore-452018

**Call:** 0731-4097170-173 | **Mob:** +91-9303172345 | **Toll Free:** 18001030059 | **SMS < INDIRA > to 56070**

**Disclaimer:** This report is for private circulation within the Indira Group. This report is strictly confidential and for information of the selected recipient only and may not be altered in any way, transmitted to, copied or distributed, in part or in whole, to any other person or to the media or reproduced in any form. This report should not be construed as an offer or solicitation to buy or sell any securities or any interest in securities. It does not constitute a personal recommendation or take into account the particular investment objectives, financial situations, or any such factor. The information, opinions estimates and forecasts contained here have been obtained from, or based upon, sources we believe to be reliable, but no representation of warranty, express or implied, is made by us to their accuracy or completeness. Opinions expressed are our current opinions as of the date appearing on this material only and are subject to change without notice.